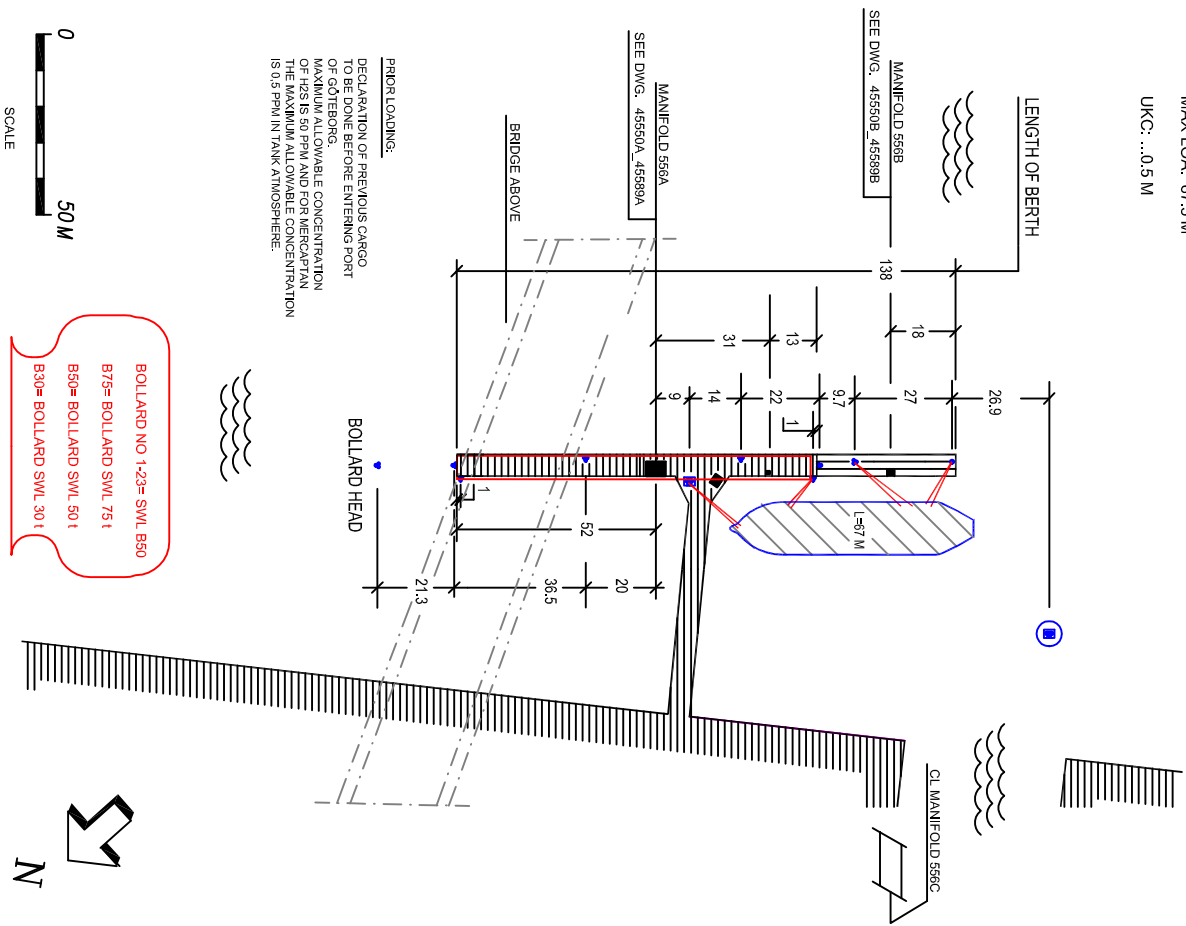


MAX DRAUGHT: --
 MAX LOA: 67.5 M
 UKC: ..0.5 M

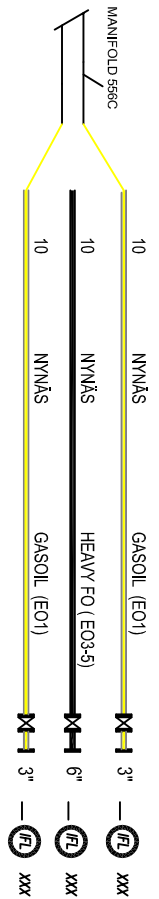


PRIOR LOADING:
 DECLARATION OF PREVIOUS CARGO
 TO BE DONE BEFORE ENTERING PORT
 OF GÖTEBORG.
 MAXIMUM ALLOWABLE CONCENTRATION
 OF HAZARDOUS SUBSTANCES FOR MERCAPTAN
 IS 0.5 PPM IN TANK ATMOSPHERE.

BOLLARD NO 1-23= SWL B50
 B75= BOLLARD SWL 75 t
 B50= BOLLARD SWL 50 t
 B30= BOLLARD SWL 30 t

1		MV	2011-03-18
REVISION NO		SIGN	REVISION DATE
RECOMMENDED MINIMUM MOORING ARRANGEMENT			
SKARVIK BERTH 556C			
ORIGIN DATE	10-07-20	DRAWN	MVA
SCALE		DRAWING NO 79-45689C	

2		MV	2011-03-18
REVISION NO		SIGN	REVISION DATE
MANIFOLD ARRANGEMENT			
SKARVIK BERTH 556C			
ORIGIN DATE	10-07-20	DRAWN	MVA
SCALE		DRAWING NO 7-45550C	



CONNECTIONS:.....HOSE BOLTED FLANGES (DIN)
 MAXIMUM 2 HOSES TO BE USED PER SHIP / SHORE
 CONNECTION
 BUNKERS:.....BY BARGE
 FRESH WATER:.....BY BARGE

PORT OF GÖTEBORG		MAX LOADING/DISCHARGING CAPACITY M ³ /H		MAX PRESSURE BAR		COMPANY		PRODUCT		SIZE OF CONN.		POS NO	
------------------	--	--	--	------------------	--	---------	--	---------	--	---------------	--	--------	--