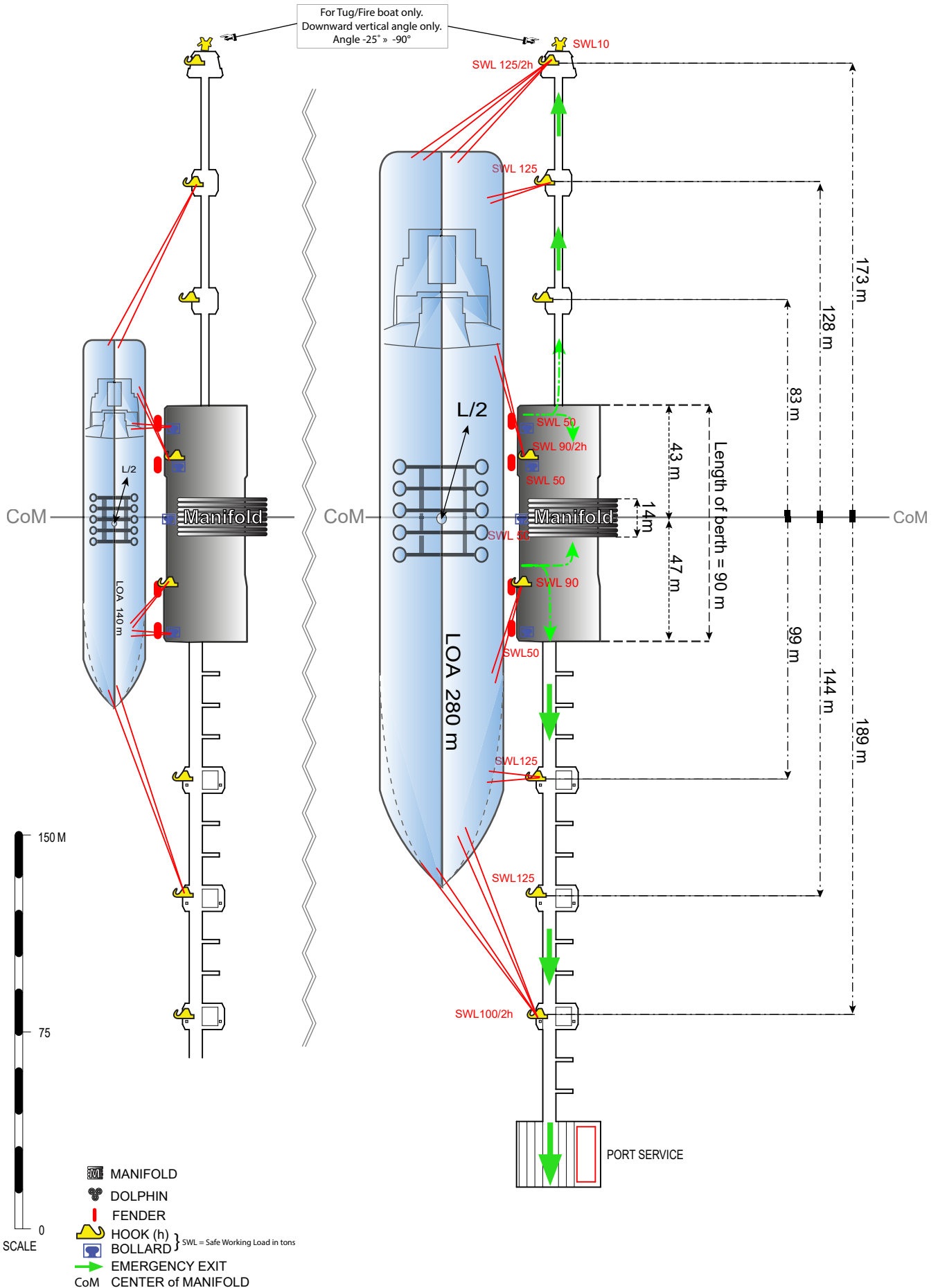


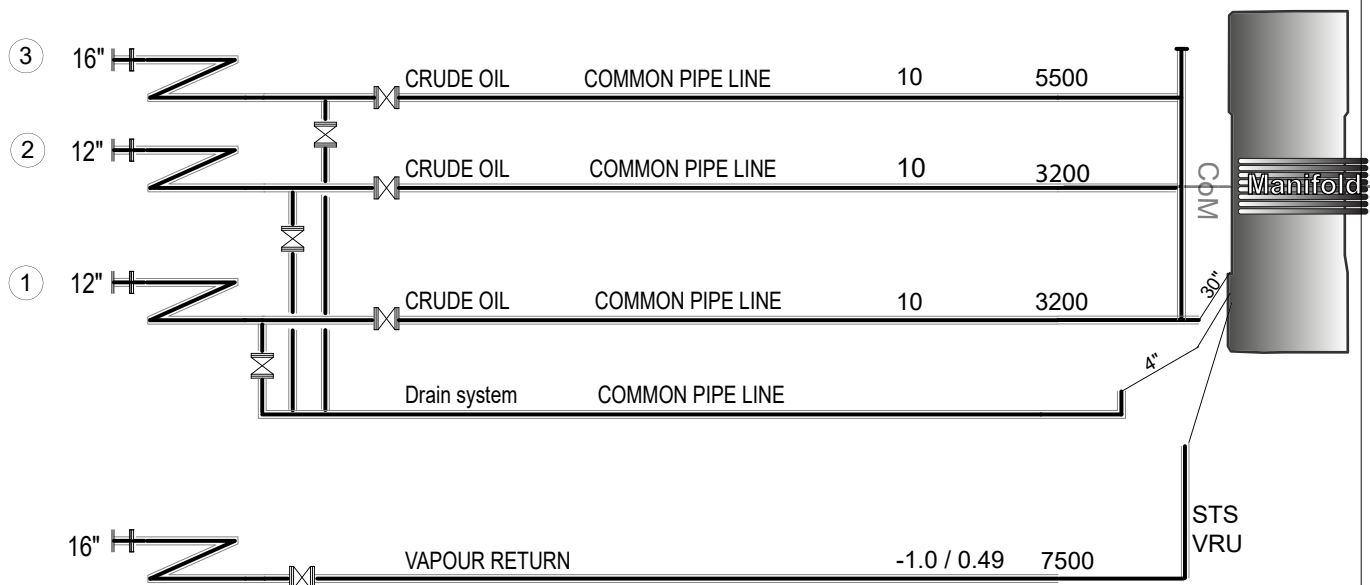
BERTH 800

MAX DRAUGHT (MW):	17.0 M	MAX/MIN MANIFOLD HEIGHT	
MAX LOA:	280 M	ABOVE WATERLINE (MW):	25.0 / 4.0 M
MAX BREADTH:	60 M	QUAY DECK HEIGHT (MW):	4.5 M
UKC:	0.5 M	MAX BCM/SCM:	169 M
MIN PARALLELL BODY:	50 M	MAX DISPLACEMENT:	250,000 T
MIN FREEBOARD (MW):	3.7 M	MAX SPEED:	0.05 M/S



	 N	BERTH DIRECTION 024° / 204°	MOORING PLAN TORSHAMNEN BERTH 800			BERTH / DRAWING NO BERTH800	APPROVED BY CL
		REV. DATE / DATE 2020-02-12	DRAWN MAFLOBE	SCALE			

HARD ARM No.	SIZE OF CONN.	PRODUCT	COMPANY	MAX PRESSURE BAR	MAX LOADING/DISCHARGING CAPACITY M3/H
--------------	---------------	---------	---------	------------------	---------------------------------------



- ① = Hard arm No.
- = Hard arm symbol
- = Hose symbol

Hard arm connection 16" reduced to 12"
 Hard arm connection 12" reduced to 10"
 Ships manifold Min. 10" or 12"

Bunkers available by barge
 Fresh water available



BERTH DIRECTION
 024° / 204°

MANIFOLD ARRANGEMENT TORSHAMNEN BERTH 800

REV. DATE / DATE
 2017-03-31

DRAWN
 MAFLOBE

SCALE

BERTH / DRAWING NO
 BERTH800

APPROVED BY
 CL