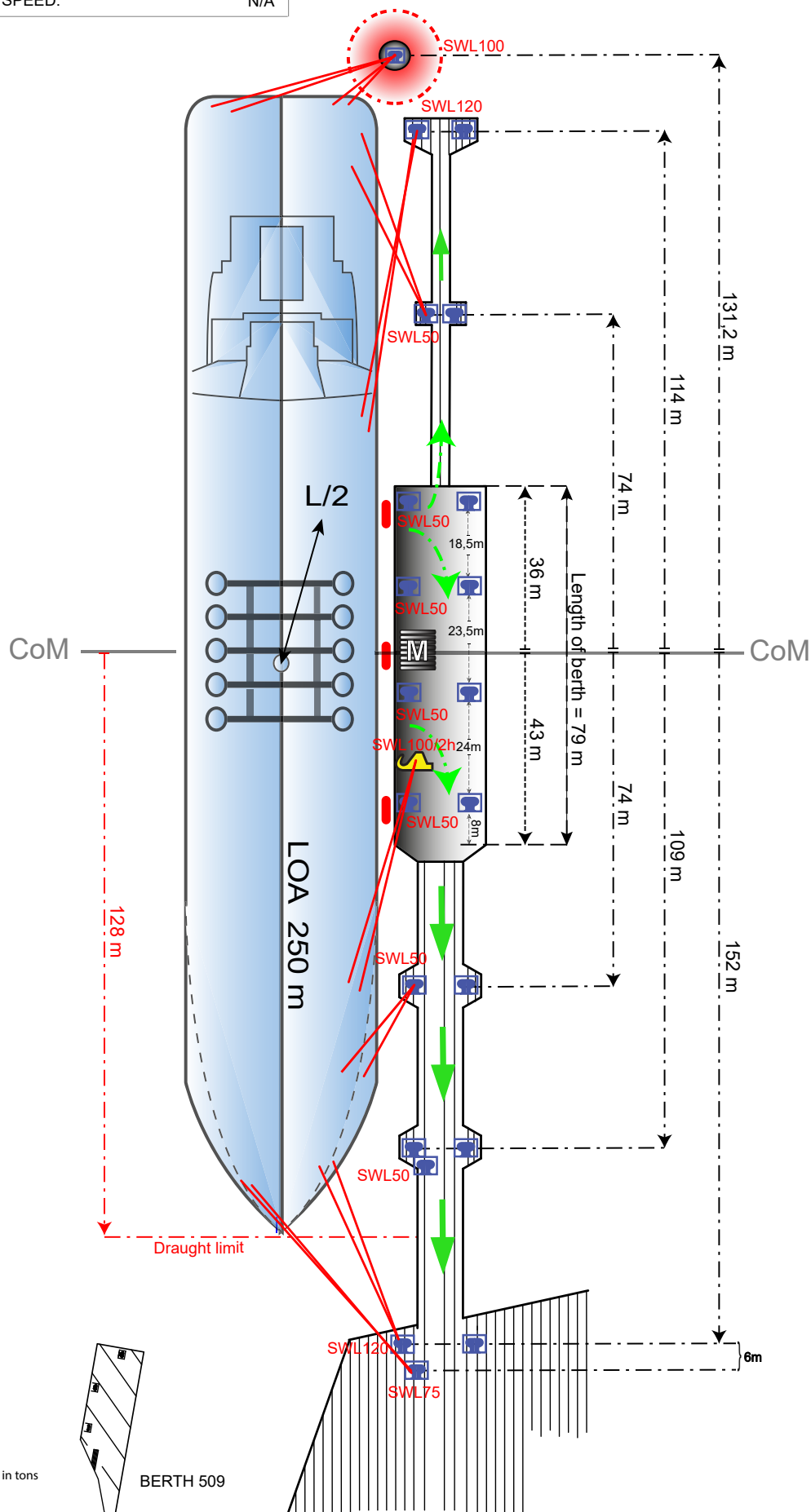


# BERTH 510

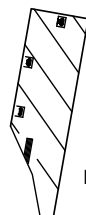
MAX DRAUGHT (MW):	12.5 M	MAX/MIN MANIFOLD HEIGHT	
MAX LOA*:	250 M	BOVE WATERLINE (MW):	17.6/3.2 M
MAX BREADTH:	47 M	QUAY DECK HEIGHT (MW):	3.5 M
UKC:	0.5 M	MAX BCM:	128 M
MIN PARALLEL BODY**:	40 M	MAX DISPLACEMENT:	N/A
MIN FREEBOARD (MW):	N/A	MAX SPEED:	N/A

\* Vessel clearance from the Energy Port, Port of Gothenburg, is needed for ships LOA ≥ 230 m.

\*\* Min. parallel body, 40 m, of which at least 30 m needs to be from ship's connected manifold to stern or forward depending on side alongside.

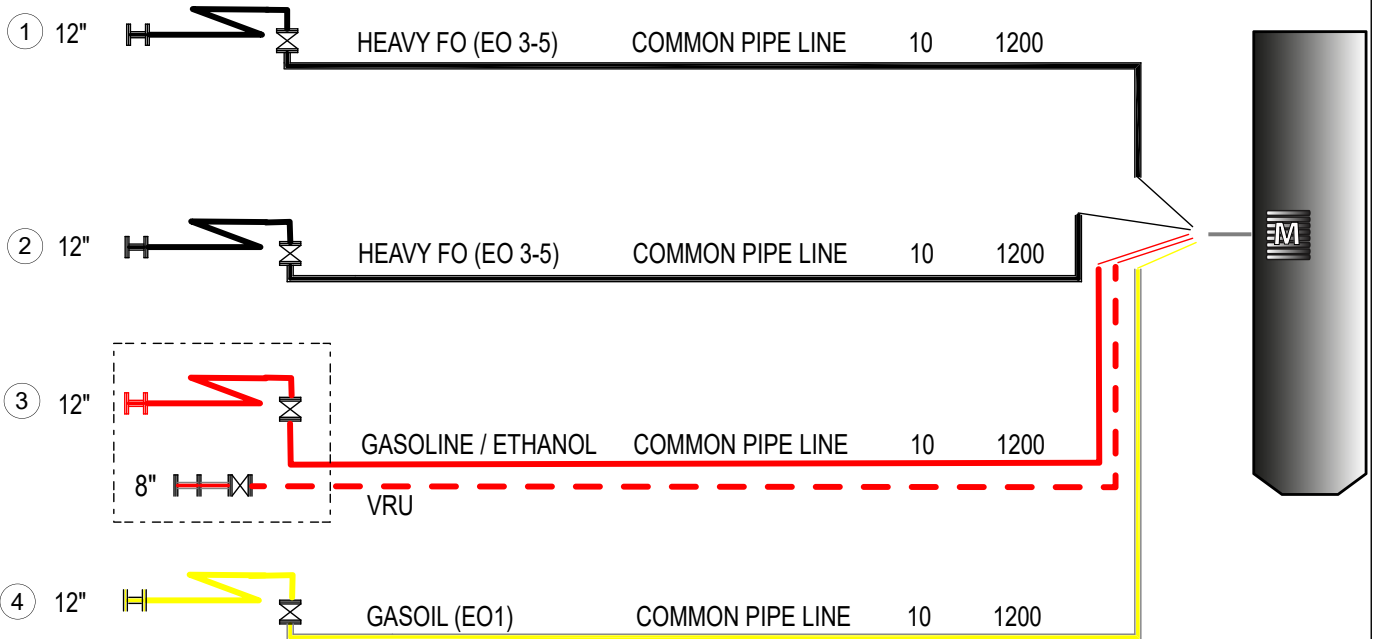


- MANIFOLD
  - DOLPHIN
  - FENDER
  - HOOK (h)
  - BOLLARD
  - EMERGENCY EXIT
  - CoM CENTER of MANIFOLD
- SWL = Safe Working Load in tons



	 N	BERTH DIRECTION 033° / 213°	<h2>MOORING PLAN SKARVIK BERTH 510</h2>			BERTH / DRAWING NO BERTH510	APPROVED BY CL
		REV. DATE / DATE 2019-05-20	DRAWN MAFLOBE	SCALE /			

No.	SIZE OF CONN.	PRODUCT	COMPANY	MAX PRESSURE BAR	MAX LOADING/DISCHARGING CAPACITY M3/H
-----	---------------	---------	---------	------------------	---------------------------------------

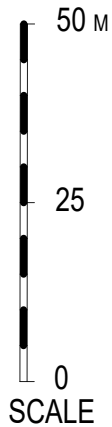







Hard arm connections  $\geq 8"$   
Hose connections  $\leq 6"$

Bunkers available by barge  
Fresh water available  
Maximum 2 hoses to be used per ship/shore connection

- ① = Hard arm No.
- = Hard arm symbol
- = Hose symbol

	 N	BERTH DIRECTION 033° / 213°	<b>MANIFOLD ARRANGEMENT SKARVIK BERTH 510</b>				BERTH / DRAWING NO BERTH510	APPROVED BY CL
			REV. DATE / DATE 2017-03-31	DRAWN MAFLOBE	SCALE /			



-  Loading arm No.
-  VRU Connection
-  BOLLARD
-  HOOK
-  FENDER

**CoM** CENTRE of MANIFOLD

