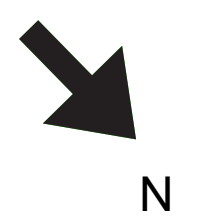
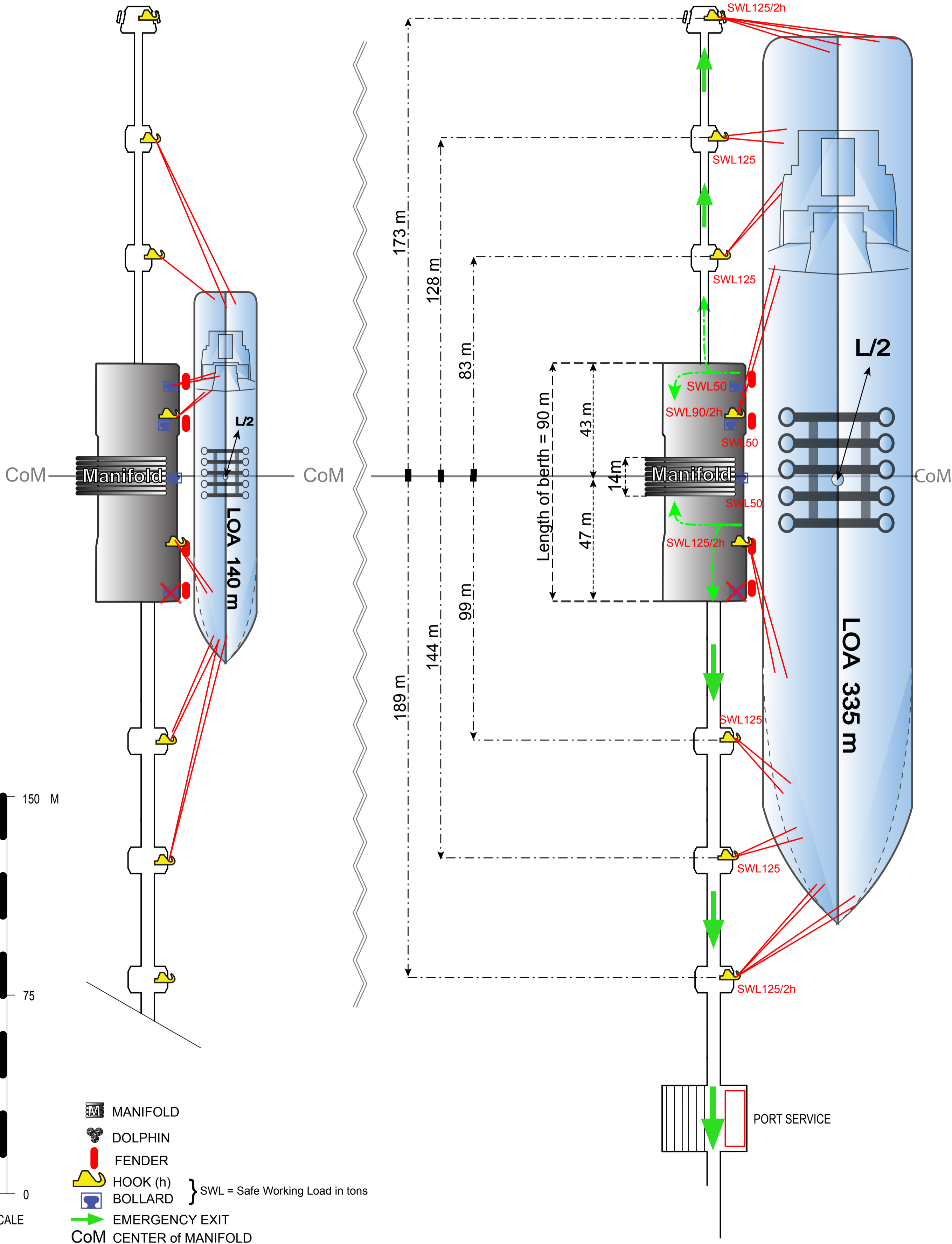


BERTH 801

MAX DRAUGHT (MW):	19.05 M	MAX/MIN MANIFOLD HEIGHT	
MAX LOA:	335 M	ABOVE WATERLINE (MW):	25.0/4.0 M
MAX BREADTH:	N/A	QUAY DECK HEIGHT (MW):	4.5 M
UKC:	1.45 M	MAX DIST. STERN TO CoM:	170 M
DEPTH (MW):	20.50 M	MAX DISPLACEMENT:	358000 T
MIN PARALLELL BODY:	40 M	MAX SPEED:	0.05 M/S
MIN FREEBOARD (MW):	3.7 M		



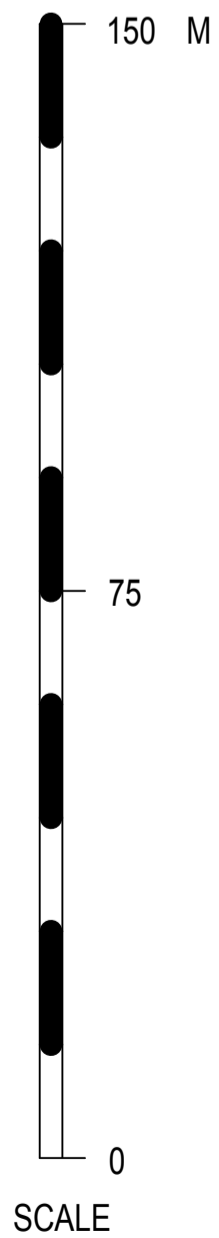
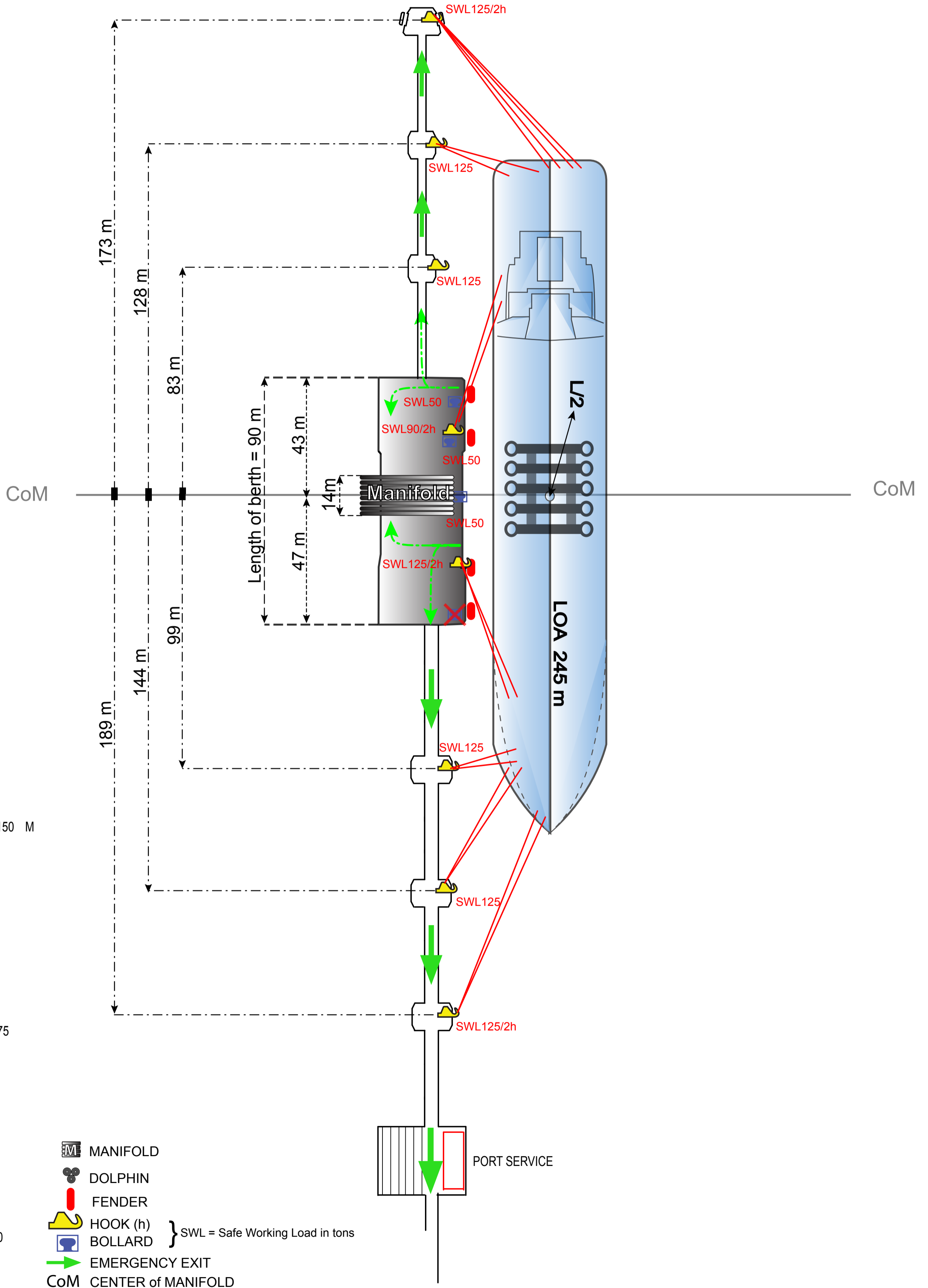
BERTH DIRECTION
024° / 204°

MOORING PLAN TORSHAMNEN BERTH 801

REV. DATE / DATE	DRAWN	SCALE	BERTH / DRAWING NO	APPROVED BY
2017-04-25 / 07-06-08	MAFLOBE/MVA		BERTH801	CL

BERTH 801

MAX DRAUGHT (MW):	19.05 M	MAX/MIN MANIFOLD HEIGHT	
MAX LOA:	335 M	ABOVE WATERLINE (MW):	25.0/4.0 M
MAX BREADTH:	N/A	QUAY DECK HEIGHT (MW):	4.5 M
UKC:	1.45 M	MAX DIST. STERN TO CoM:	170 M
DEPTH (MW):	20.50 M	MAX DISPLACEMENT:	358000 T
MIN PARALLELL BODY:	40 M	MAX SPEED:	0.05 M/S
MIN FREEBOARD (MW):	3.7 M		



- MANIFOLD
 - DOLPHIN
 - FENDER
 - HOOK (h)
 - BOLLARD
 - EMERGENCY EXIT
 - CoM CENTER of MANIFOLD
- } SWL = Safe Working Load in tons



BERTH DIRECTION
024° / 204°

MOORING PLAN TORSHAMNEN BERTH 801

REV. DATE / DATE
2017-04-25 / 07-06-08

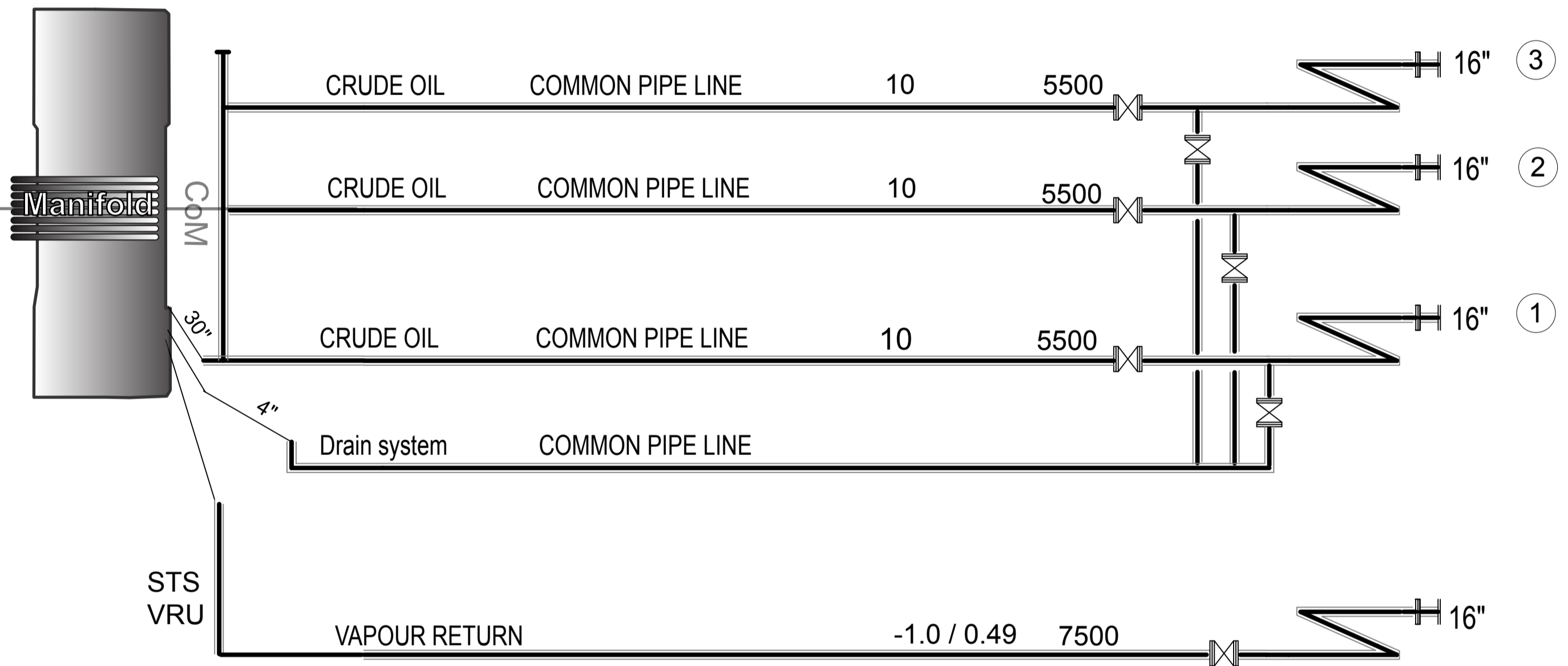
DRAWN
MAFLOBE/MVA

SCALE

BERTH / DRAWING NO
BERTH801

APPROVED BY
CL

PRODUCT	COMPANY	MAX PRESSURE BAR	MAX LOADING/DISCHARGING CAPACITY M3/H	SIZE OF CONN.	HARD ARM No.
---------	---------	---------------------	--	---------------	--------------------



① = Hard arm No.

= Hard arm symbol

= Hose symbol

Bunkers available by barge
Fresh water available