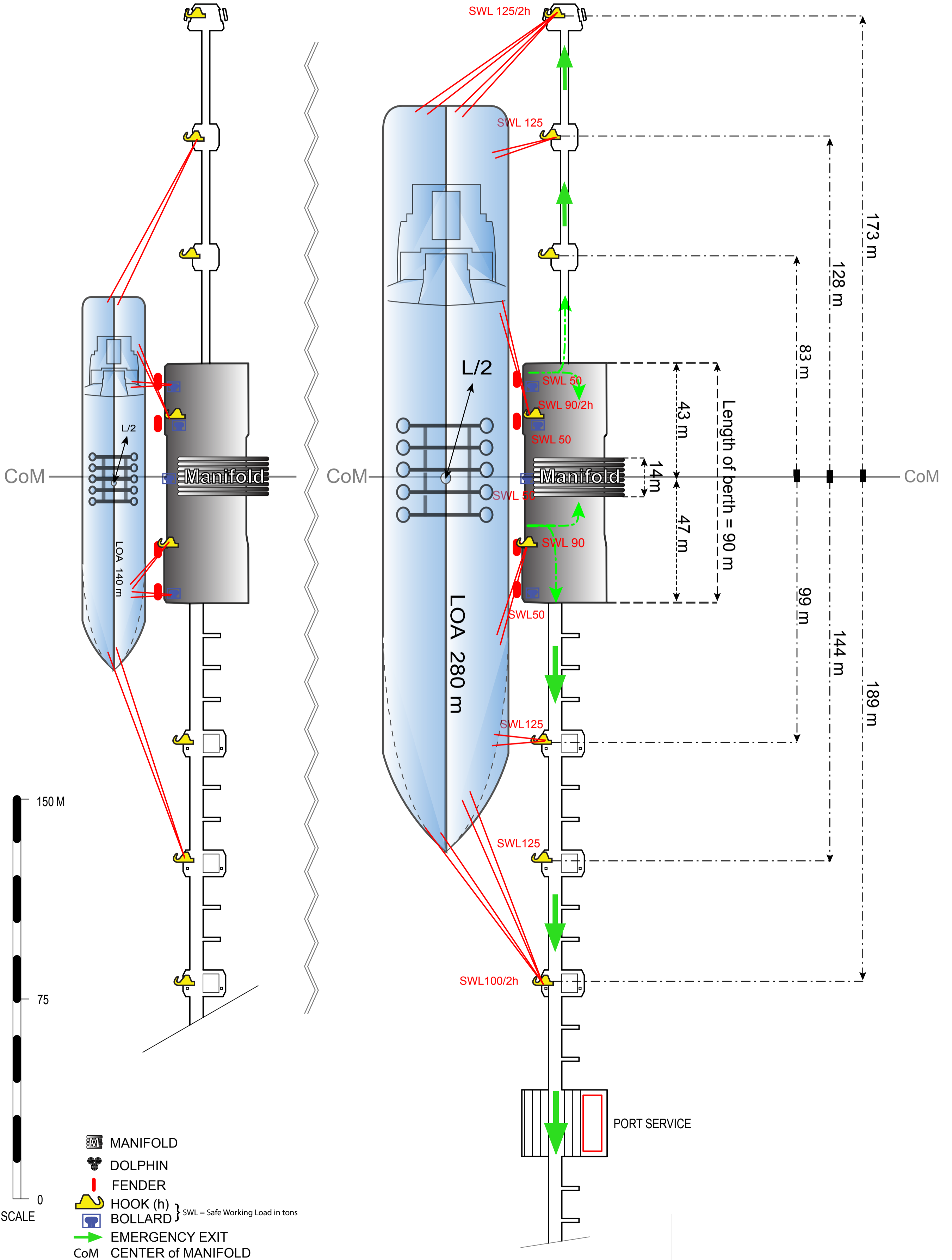


BERTH 800

MAX DRAUGHT (MW):	17.0 M	MAX/MIN MANIFOLD HEIGHT	
MAX LOA:	280 M	ABOVE WATERLINE (MW):	25.0 / 4.0 M
MAX BREADTH	60 M	QUAY DECK HEIGHT (MW):	4.5 M
UKC:	0.5 M	MAX BCM/SCM:	169 M
MIN PARALLELL BODY:	50 M	MAX DISPLACEMENT:	250,000 T
MIN FREEBOARD (MW):	3.7 M	MAX SPEED:	0.05 M/S

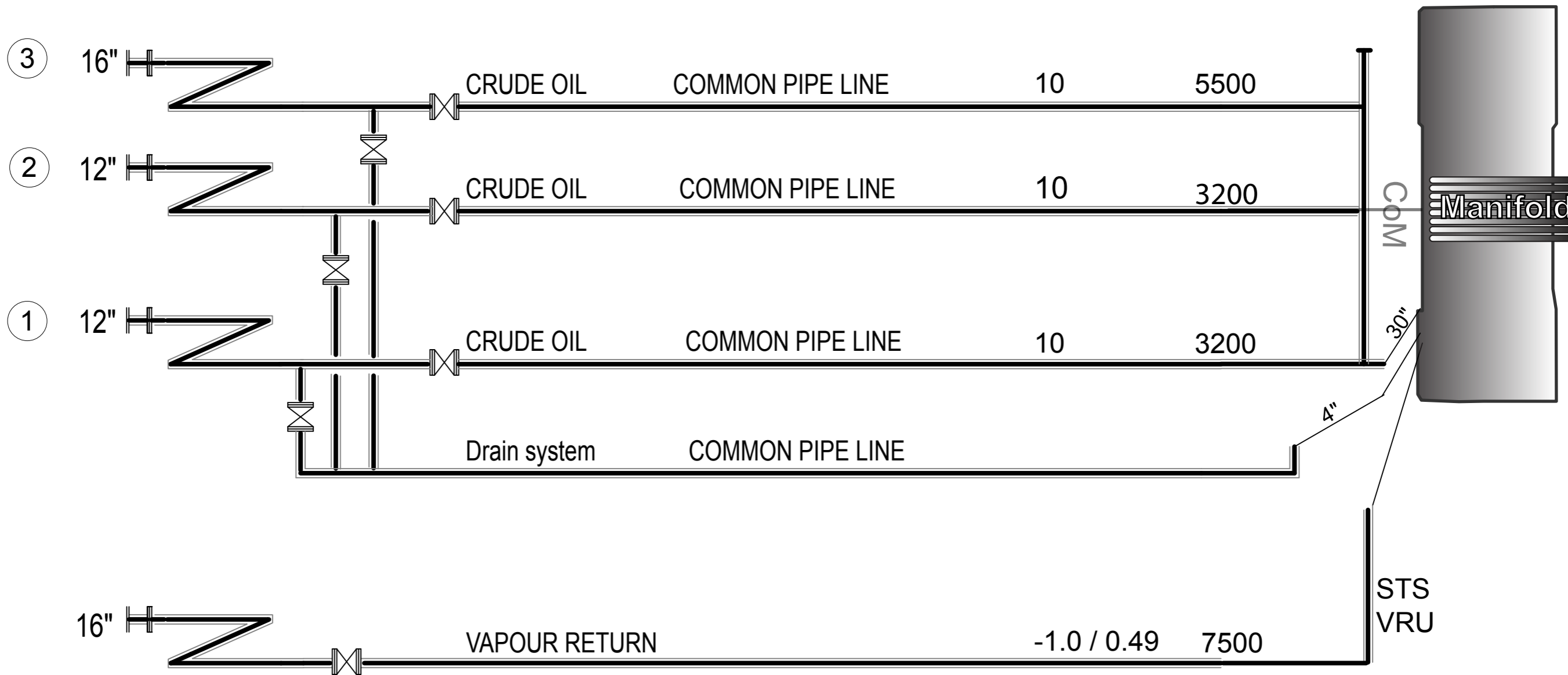


BERTH DIRECTION
024° / 204°

MOORING PLAN TORSHAMNEN BERTH 800


REV. DATE / DATE	DRAWN	SCALE	BERTH / DRAWING NO	APPROVED BY
2017-04-05 / 07-06-08	MAFLOBE/MVA		BERTH800	CL

HARD ARM No.	SIZE OF CONN.	PRODUCT	COMPANY	MAX PRESSURE BAR	MAX LOADING/DISCHARGING CAPACITY M3/H
--------------	---------------	---------	---------	------------------	---------------------------------------



① = Hard arm No.

 = Hard arm symbol

 = Hose symbol

Hard arm connection 16" reduced to 12"
 Hard arm connection 12" reduced to 10"
 Ships manifold Min. 10" or 12"

Bunkers available by barge
 Fresh water available



BERTH DIRECTION
 024° / 204°

MANIFOLD ARRANGEMENT TORSHAMNEN BERTH 800

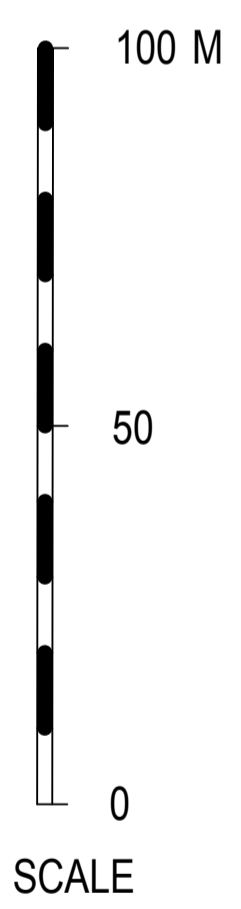
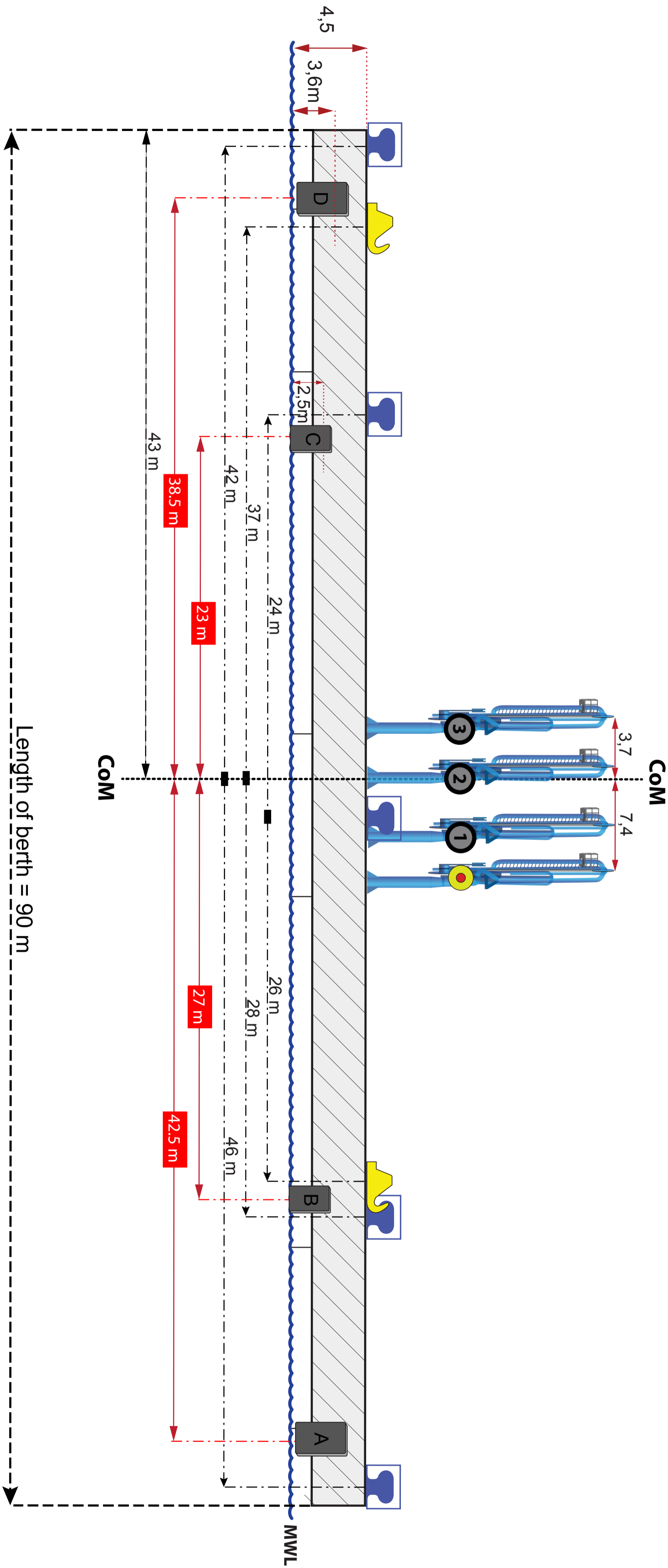
REV. DATE / DATE
 2017-03-31 / 07-03-27

DRAWN
 MAFLOBE/MVA

SCALE

BERTH / DRAWING NO
 BERTH800

APPROVED BY
 CL



- Hard arm No.
- VRU Connection
- BOLLARD
- HOOK
- FENDER

CoM CENTRE of MANIFOLD



BERTH DIRECTION
024°/204°

BERTH 800 TORSHAMNEN SIDE VIEW

REV. DATE / DATE
2017-03-31 / 14-03-07

DRAWN
MAFLOBE

SCALE

BERTH / DRAWING NO
BERTH 800 / 14-1

APPROVED BY
CL