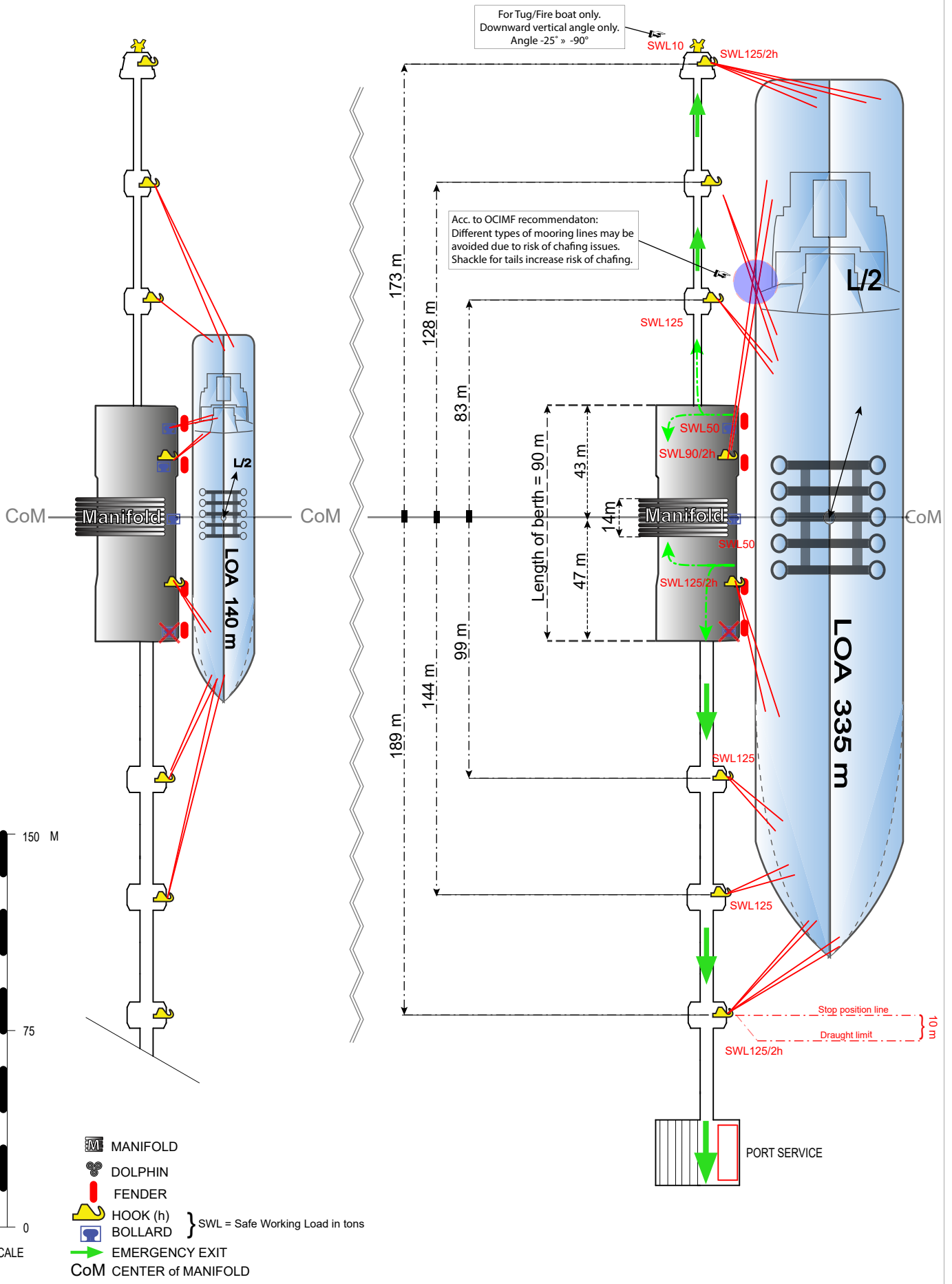


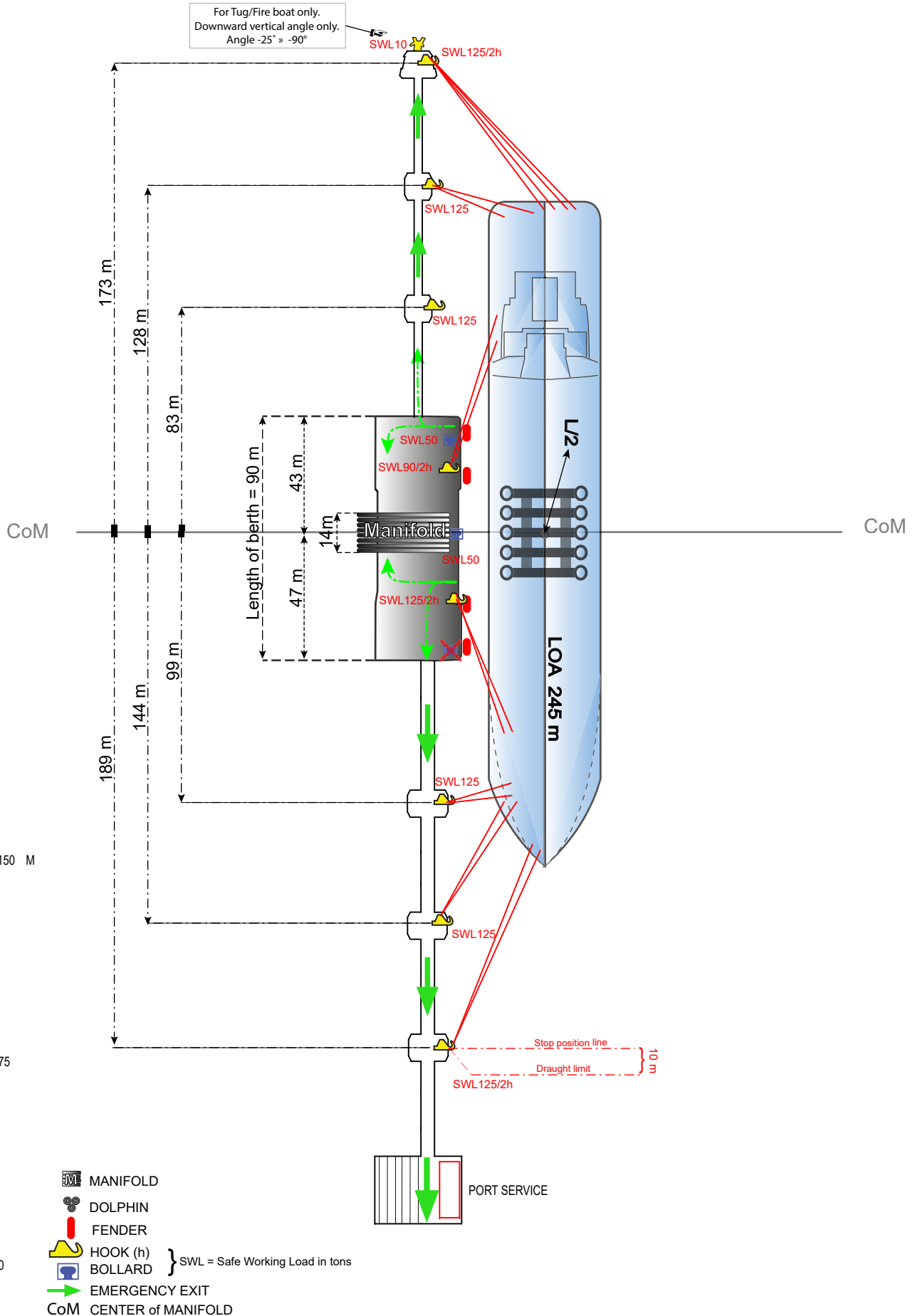
BERTH 801

MAX DRAUGHT (MW):	19.05 M	MAX/MIN MANIFOLD HEIGHT	
MAX LOA:	335 M	ABOVE WATERLINE (MW):	25.0/4.0 M
MAX BREADTH:	N/A	QUAY DECK HEIGHT (MW):	4.5 M
UKC:	1.45 M	MAX DIST. STERN TO CoM:	170 M
DEPTH (MW):	20.50 M	MAX DISPLACEMENT:	358000 T
MIN PARALLELL BODY:	50 M	MAX SPEED:	0.05 M/S
MIN FREEBOARD (MW):	3.7 M		



BERTH 801

MAX DRAUGHT (MW):	19.05 M	MAX/MIN MANIFOLD HEIGHT	
MAX LOA:	335 M	ABOVE WATERLINE (MW):	25.0/4.0 M
MAX BREADTH:	N/A	QUAY DECK HEIGHT (MW):	4.5 M
UKC:	1.45 M	MAX DIST. STERN TO CoM:	170 M
DEPTH (MW):	20.50 M	MAX DISPLACEMENT:	358000 T
MIN PARALLELL BODY:	50 M	MAX SPEED:	0.05 M/S
MIN FREEBOARD (MW):	3.7 M		



BERTH DIRECTION
024° / 204°

MOORING PLAN TORSHAMNEN BERTH 801

REV. DATE
2022-12-05

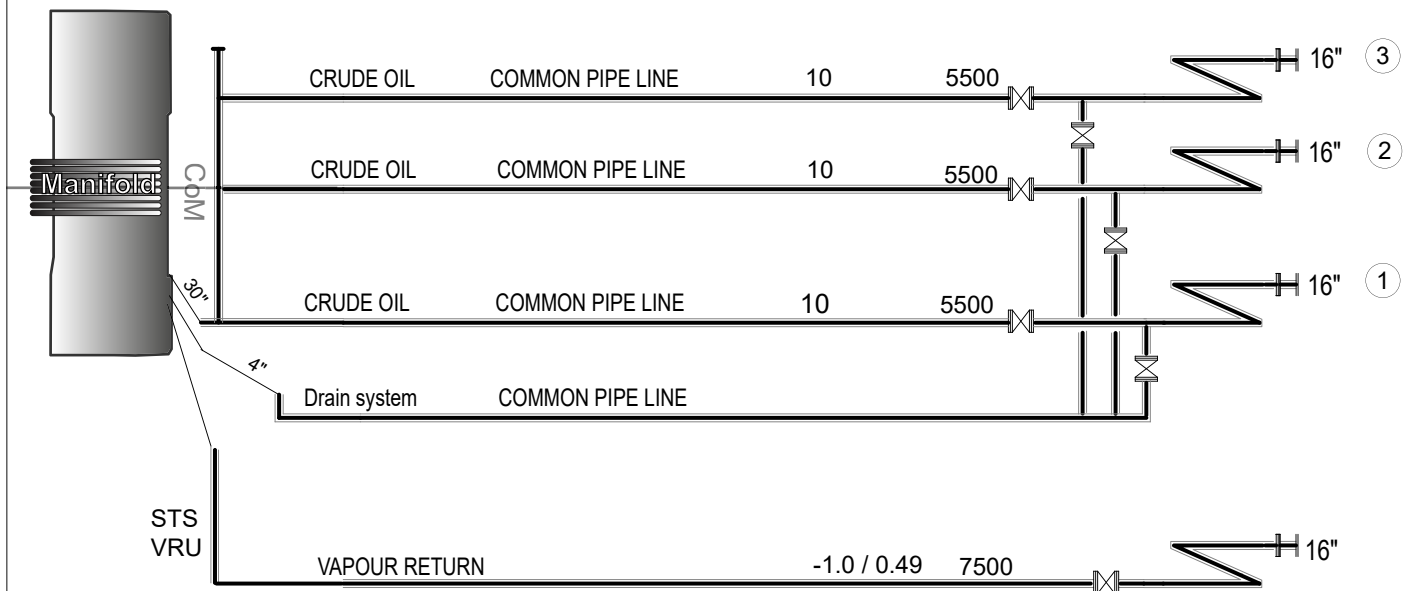
DRAWN
MAFLOBE

SCALE

BERTH / DRAWING NO
BERTH801

APPROVED BY
CL

PRODUCT	COMPANY	MAX PRESSURE BAR	MAX LOADING/DISCHARGING CAPACITY M3/H	SIZE OF CONN.	HARD ARM No.
---------	---------	---------------------	--	---------------	--------------------



- ① = Hard arm No.
- = Hard arm symbol
- = Hose symbol

Bunkers available by barge
Fresh water available

	 N	BERTH DIRECTION 024° / 204°	MANIFOLD ARRANGEMENT TORSHAMNEN BERTH 801				BERTH / DRAWING NO BERTH801	APPROVED BY CL
		REV. DATE / DATE 2017-04-25 / 07-03-27	DRAWN MAFLOBE/MVA	SCALE 				