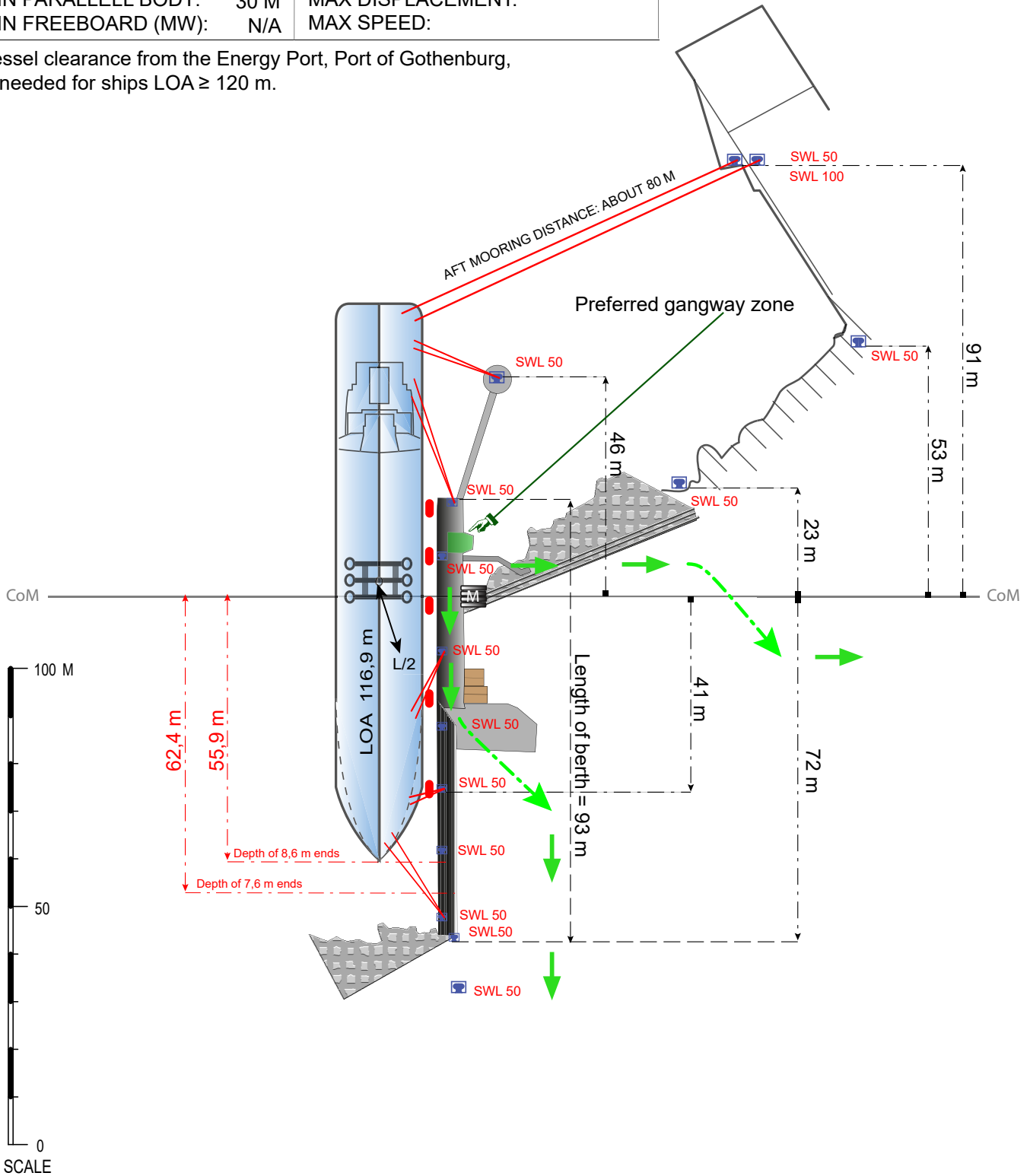


BERTH 644

MAX DRAUGHT (MW):	7,6 M	MAX/MIN MANIFOLD HEIGHT	
MAX LOA:	135 M	ABOVE WATERLINE (MW):	11,5 M
MAX BREADTH:	N/A	QUAY DECK HEIGHT (MW):	3 M
UKC:	1,0 M	MAX BCM/SCM:	
MIN PARALLELL BODY:	30 M	MAX DISPLACEMENT:	
MIN FREEBOARD (MW):	N/A	MAX SPEED:	

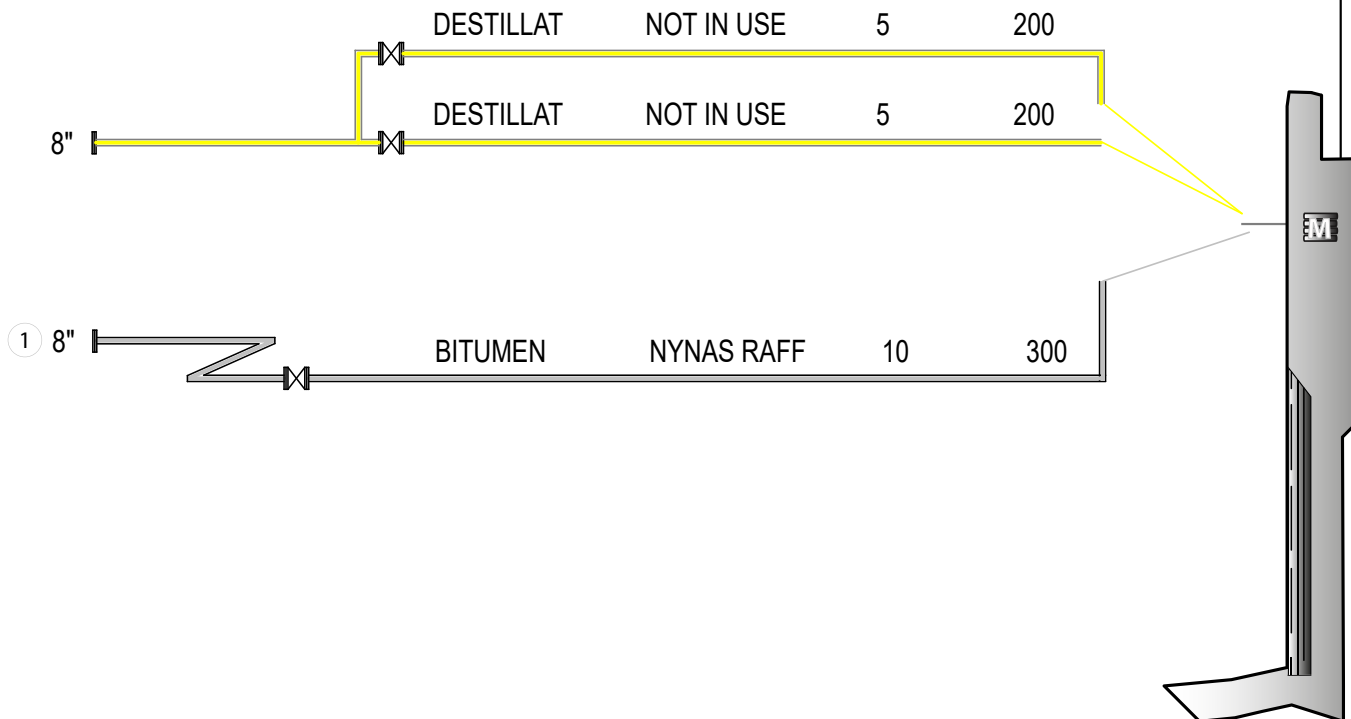
Vessel clearance from the Energy Port, Port of Gothenburg, is needed for ships LOA \geq 120 m.



- MANIFOLD
- DOLPHIN
- FENDER
- HOOK
- BOLLARD
- EMERGENCY EXIT
- CoM CENTER of MANIFOLD



	 N	BERTH DIRECTION 029° / 209°	MOORING PLAN BERTH 644, LOA 117 m			BERTH / DRAWING NO BERTH 644 LOA 117	APPROVED BY CL
		REV. DATE 2020-06-08	DRAWN MAFLOBE	SCALE 			

HARD ARM No.	SIZE OF CONN.	PRODUCT	COMPANY	MAX PRESSURE BAR	MAX LOADING/DISCHARGING CAPACITY M3/H
--------------	---------------	---------	---------	------------------	---------------------------------------



- ① = Hard arm No.
- = Hard arm symbol
- = Hose symbol

Connections: Hard arm and hose
Bunkers available by barge
Fresh water available

		BERTH DIRECTION 029° / 209°	MANIFOLD ARRANGEMENT BERTH 644				BERTH / DRAWING NO BERTH 644	APPROVED BY CL
			REV. DATE / DATE 2020-09-18	DRAWN MAFLOBE	SCALE 			